

## POULTRY AND POULTRY MEAT STATISTICS

The latest national statistics produced by Defra on the activity of UK hatcheries and poultry slaughterhouses and other related poultry statistics were released on 24 September 2009 according to the arrangements approved by the UK Statistics Authority.

<u>Contents</u>	<u>Page</u>
Notes	2
Section 1 UK Hatcheries Data - Placings and Eggs Set	3 to 5
Section 2 UK Trade in Live Poultry	6 to 7
Section 3 UK Poultry Slaughterhouse Data - Numbers Slaughtered and Average Weights	8 to 9
Section 4 UK Poultrymeat Production, Trade and Domestic Usage	10 to 12
Section 5 Other Poultry Statistics	13
Sources	14

This notice is available at:

<https://statistics.defra.gov.uk/esg/poultryns.htm>

Additional information on egg packing, processing and trade is available at:

<https://statistics.defra.gov.uk/esg/eggns.htm>

This notice will be updated at 09:30 on 22 October 2009

---

**Enquiries to:** Leigh Riley, Department for Environment, Food and Rural Affairs,  
Room 309, Foss House, Kings Pool, 1-2 Peasholme Green, York YO1 7PX,  
Tel: ++44 (0)1904 455095, email: leigh.riley@defra.gsi.gov.uk

---

## **Notes:**

- 1 The percentage changes shown are calculated using unrounded figures. Thus any percentage changes calculated using the published (rounded) figures may not equate exactly with the changes shown.
- 2 The UK 12 month moving totals represent the sum of the 12 months up to and including the date indicated. They should be seen as a trend measure that is not affected by seasonality.
- 3 The Hatcheries Survey is statutory with all registered hatcheries taking part in the survey for England & Wales. The Rural & Environment Research and Analysis Directorate (RERAD) and the Department of Agriculture and Rural Development (DARD) conduct similar surveys and contribute data towards the UK totals.
- 4 All trade data contained in this statistics notice is based on official Revenue and Customs Trade Data.
- 5 The Poultry Slaughterhouse Survey is a voluntary sample survey of registered slaughterhouses only.
- 6 Poultrymeat production is calculated using average slaughterhouse survey liveweights and industry advice on liveweight to carcass weight conversions, lifespan and mortality. Includes estimates for slaughterings on-farm and at unregistered slaughterhouses.
- 7 Poultry feed data have been sourced from two surveys, one carried out by Defra, and one by DARD. The survey of 'Animal Feedingstuffs and Raw Materials' is a statutory monthly survey of all known compounders in Great Britain, and the DARD survey 'Deliveries of compound and other processed animal feedingstuffs by Northern Ireland feedstuffs manufacturers' is a monthly survey of feed compounders in Northern Ireland. The survey of 'Poultry feed production for units with large flocks' is a voluntary monthly survey of all integrated poultry units with more than 50,000 birds.
- 8 All charts are numbered in accordance with the relevant table containing the corresponding data.

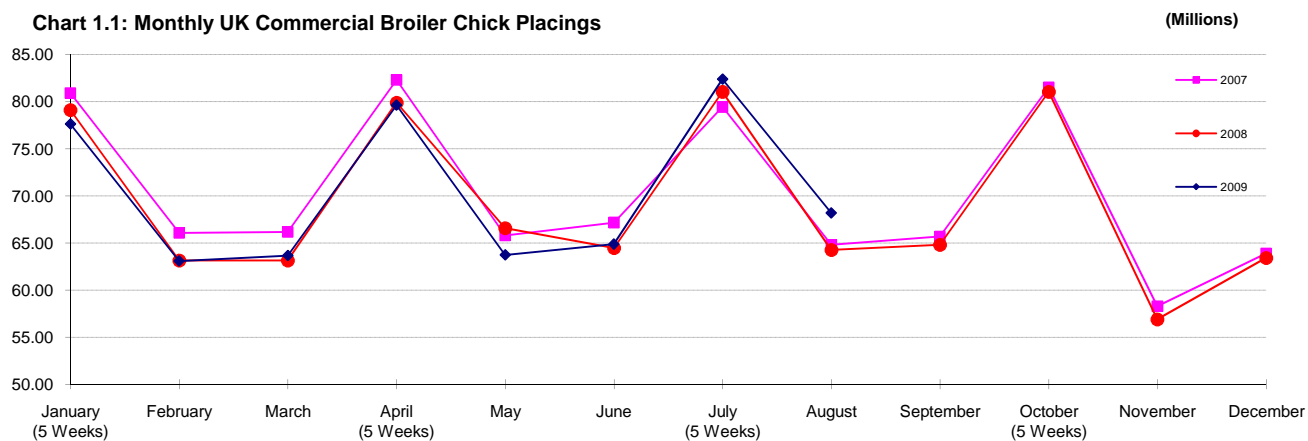
## Section 1 UK Hatcheries Data - Placings and Eggs Set

**Table 1.1: Commercial Broiler Chick Placings in the UK from UK Hatcheries**

Statistical Months (4 or 5 Weeks)	GB		NI		UK			UK 12 Month Moving Totals	
	2008	2009	2008	2009	2008	2009	% change 2009/2008	2008	2009
January (5 Weeks)	69.18	67.80	9.95	9.83	79.14	77.63	-1.9%	840.37	826.27
February	55.13	54.56	8.00	8.53	63.13	63.09	-0.1%	837.44	826.23
March	55.28	55.02	7.85	8.66	63.13	63.68	0.9%	834.40	826.79
April (5 Weeks)	69.79	68.65	10.11	10.99	79.89	79.64	-0.3%	831.97	826.53
May	58.28	55.03	8.29	8.72	66.57	63.75	-4.2%	832.74	823.71
June	56.35	56.50	8.10	8.38	64.45	64.88	0.7%	830.02	824.13
July (5 Weeks)	70.78	71.62	10.28	10.78	81.06	82.41	1.7%	831.62	825.48
August	56.19	59.27	8.07	8.93	64.26	68.20	6.1%	831.07	829.41
September	56.65		8.14		64.80			830.16	
October (5 Weeks)	71.63		9.44		81.06			829.67	
November	50.13		6.75		56.89			828.27	
December	55.58		7.82		63.40			827.78	
<b>Total</b>	<b>724.98</b>	<b>488.45</b>	<b>102.81</b>	<b>74.82</b>	<b>827.78</b>	<b>563.27</b>			

For historic data on this table, and for monthly updates please go to : <https://statistics.defra.gov.uk/esg/datasets/chicpes.xls>

**Chart 1.1: Monthly UK Commercial Broiler Chick Placings**



**Table 1.2: Female Broiler Parent Chick Placings in the UK (a) (b) (c)**

Statistical Months (4 or 5 Weeks)	UK Parent Females			UK 12 Month Moving Total	
	2008	2009	% change 2009/2008	2008	2009
January (5 Weeks)	0.64	0.70	9.1%	6.85	6.79
February	0.59	0.51	-14.4%	6.98	6.70
March	0.41	0.36	-11.9%	6.84	6.65
April (5 Weeks)	0.53	0.68	29.0%	6.73	6.81
May	0.50	0.48	-4.5%	6.69	6.78
June	0.47	0.57	22.2%	6.56	6.89
July (5 Weeks)	0.78	0.66	-14.8%	6.59	6.77
August	0.58	0.48	-17.5%	6.73	6.67
September	0.56			6.79	
October (5 Weeks)	0.56			6.67	
November	0.51			6.72	
December	0.58			6.73	
<b>Total</b>	<b>6.73</b>	<b>4.45</b>			

(a) Excludes 'by-product' chicks which are included in Table 1.1 above

(b) Excludes grandparent chicks and 'free chicks'

(c) Includes imported female parent chicks

For historic data on this table, and for monthly updates please go to : <https://statistics.defra.gov.uk/esg/datasets/chicpes.xls>

**Table 1.3: Turkey Poults Placings in the UK from UK Hatcheries (a)**

(Millions)

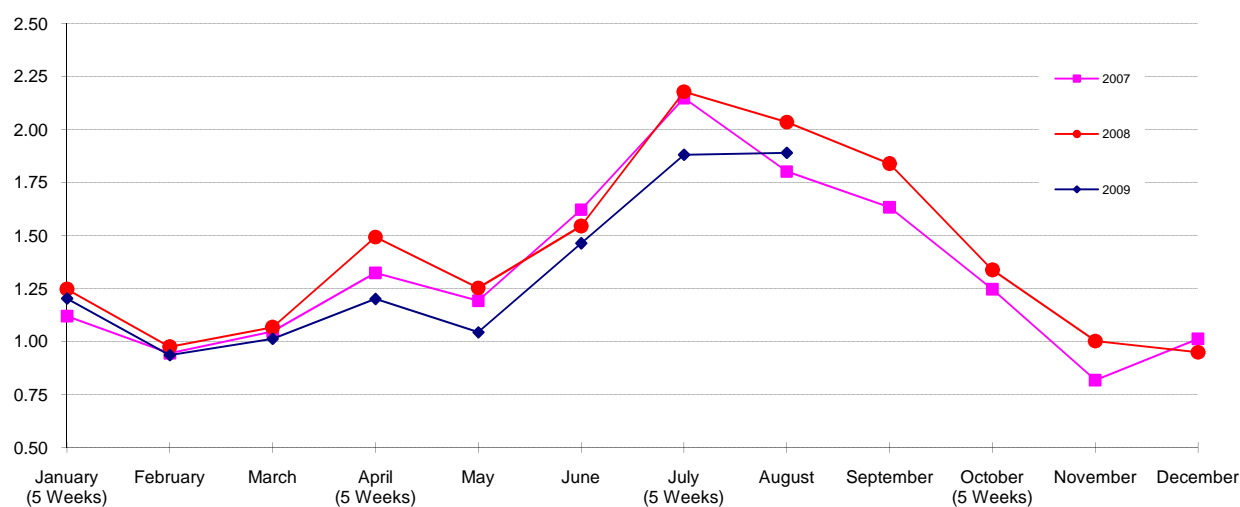
Statistical Months (4 or 5 Weeks)	E&W		UK			UK 12 Month Moving Totals	
	2008	2009	2008	2009	% change 2009/2008	2008	2009
	January (5 Weeks)	1.15	1.11	1.25	1.20	-3.6%	16.04
February	0.90	0.85	0.98	0.94	-4.1%	16.07	16.84
March	0.99	0.92	1.07	1.01	-5.1%	16.09	16.79
April (5 Weeks)	1.39	1.11	1.49	1.20	-19.6%	16.26	16.49
May	1.16	0.99	1.25	1.04	-16.7%	16.32	16.28
June	1.44	1.40	1.55	1.46	-5.3%	16.24	16.20
July (5 Weeks)	2.04	1.81	2.18	1.88	-13.7%	16.27	15.90
August	1.83	1.63	2.04	1.89	-7.2%	16.51	15.76
September	1.60		1.84			16.71	
October (5 Weeks)	1.20		1.34			16.80	
November	0.95		1.00			16.99	
December	0.88		0.95			16.92	
<b>Total</b>	<b>15.54</b>	<b>9.82</b>	<b>16.92</b>	<b>10.63</b>			

(a) Includes female breeder poults, but male breeder poults are excluded

For historic data on this table, and for monthly updates please go to : <https://statistics.defra.gov.uk/esg/datasets/chicpes.xls>

**Chart 1.3: Monthly UK Turkey Poults Placings**

(Millions)



**Table 1.4: Commercial Layer Chick Placings in the UK from UK Hatcheries**

(Millions)

Statistical Months (4 or 5 Weeks)	UK			UK 12 Month Moving Totals	
	2008	2009	% change 2009/2008	2008	2009
	January (5 Weeks)	2.80	2.96	5.6%	31.05
February	2.76	2.62	-4.9%	31.46	31.10
March	2.55	2.34	-8.2%	31.76	30.90
April (5 Weeks)	3.09	3.10	0.3%	32.17	30.91
May	2.00	2.42	21.3%	31.50	31.33
June	2.65	3.08	16.2%	31.57	31.76
July (5 Weeks)	3.32	3.35	1.1%	31.76	31.80
August	2.40	2.38	-0.6%	31.71	31.78
September	2.02			31.30	
October (5 Weeks)	2.90			31.07	
November	2.43			31.03	
December	2.17			31.08	
<b>Total</b>	<b>31.08</b>	<b>22.26</b>			

For historic data on this table, and for monthly updates please go to : <https://statistics.defra.gov.uk/esg/datasets/chicpes.xls>

**Table 1.5: Broiler Eggs Set by UK Hatcheries (a)**

(Millions)

Statistical Months (4 or 5 Weeks)	UK Commercial Broiler Eggs Set			UK Broiler Breeder Eggs Set		Total UK Broiler Eggs Set		UK 12 Month Moving Totals	
	2008	2009	% change 2009/2008	2008	2009	2008	2009	2008	2009
	January (5 Weeks)	98.50	98.05	-0.5%	6.88	6.56	105.38	104.61	1,104.62
February	77.78	80.74	3.8%	4.98	4.45	82.75	85.19	1,101.02	1,088.91
March	79.09	79.12	0.0%	5.00	4.00	84.09	83.12	1,100.79	1,087.93
April (5 Weeks)	100.44	99.14	-1.3%	6.26	5.32	106.71	104.46	1,100.13	1,085.69
May	79.97	80.92	1.2%	5.08	4.85	85.05	85.77	1,099.07	1,086.41
June	79.81	82.05	2.8%	5.02	4.30	84.83	86.35	1,097.16	1,087.93
July (5 Weeks)	95.74	103.40	8.0%	6.36	5.42	102.10	108.82	1,092.32	1,094.65
August	78.30	84.16	7.5%	5.31	3.88	83.61	88.04	1,089.43	1,099.08
September	80.07			5.31		85.38		1,088.61	
October (5 Weeks)	91.07			7.18		98.25		1,087.61	
November	79.69			6.27		85.97		1,087.47	
December	78.00			5.11		83.11		1,087.24	
<b>Total</b>	<b>1,018.47</b>	<b>707.59</b>		<b>68.77</b>	<b>38.77</b>	<b>1,087.24</b>	<b>746.37</b>		

(a) Includes eggs set to produce chicks for placing outside the UK

 For historic data on this table, and for monthly updates please go to : <https://statistics.defra.gov.uk/esg/datasets/chicpes.xls>
**Table 1.6: Turkey Eggs Set by UK Hatcheries (a)**

(Millions)

Statistical Months (4 or 5 Weeks)	E&W		UK			UK 12 Month Moving Totals	
	2008	2009	2008	2009	% change 2009/2008	2008	2009
	January (5 Weeks)	1.60	1.53	1.73	1.67	-3.7%	22.60
February	1.21	1.30	1.32	1.42	7.5%	22.45	23.64
March	1.44	1.13	1.54	1.26	-18.1%	22.68	23.36
April (5 Weeks)	1.94	1.74	2.09	1.89	-9.6%	22.81	23.16
May	2.35	2.13	2.48	2.21	-10.7%	22.92	22.90
June	2.53	2.35	2.67	2.46	-7.8%	23.04	22.69
July (5 Weeks)	3.03	2.95	3.39	3.38	-0.3%	23.40	22.68
August	2.20	2.06	2.52	2.42	-4.0%	23.76	22.57
September	1.38		1.52			23.80	
October (5 Weeks)	1.61		1.70			23.79	
November	1.24		1.35			23.69	
December	1.18		1.30			23.61	
<b>Total</b>	<b>21.70</b>	<b>15.19</b>	<b>23.61</b>	<b>16.71</b>			

(a) Includes only eggs set for commercial stock including those for placing outside the UK

 For historic data on this table, and for monthly updates please go to : <https://statistics.defra.gov.uk/esg/datasets/chicpes.xls>
**Table 1.7: Layer Eggs Set by UK Hatcheries (a)**

(Millions)

Statistical Months (4 or 5 Weeks)	UK			UK 12 Month Moving Totals	
	2008	2009	% change 2009/2008	2008	2009
	January (5 Weeks)	9.28	9.01	-2.9%	86.83
February	6.79	6.58	-3.2%	87.34	87.29
March	6.79	7.11	4.7%	88.16	87.61
April (5 Weeks)	8.10	9.06	11.8%	87.45	88.57
May	7.03	7.97	13.4%	87.11	89.51
June	7.86	7.46	-5.1%	88.09	89.11
July (5 Weeks)	8.97	8.97	0.0%	88.39	89.11
August	5.45	7.36	35.1%	87.85	91.02
September	7.11			87.67	
October (5 Weeks)	7.74			87.18	
November	6.85			87.45	
December	5.80			87.77	
<b>Total</b>	<b>87.77</b>	<b>63.52</b>			

(a) Includes only eggs set for commercial stock including those for placing outside the UK

 For historic data on this table, and for monthly updates please go to : <https://statistics.defra.gov.uk/esg/datasets/chicpes.xls>

## Section 2 UK Trade in Live Poultry

**Table 2.1: UK Trade in Commercial Broiler Chicks (a) (b)**

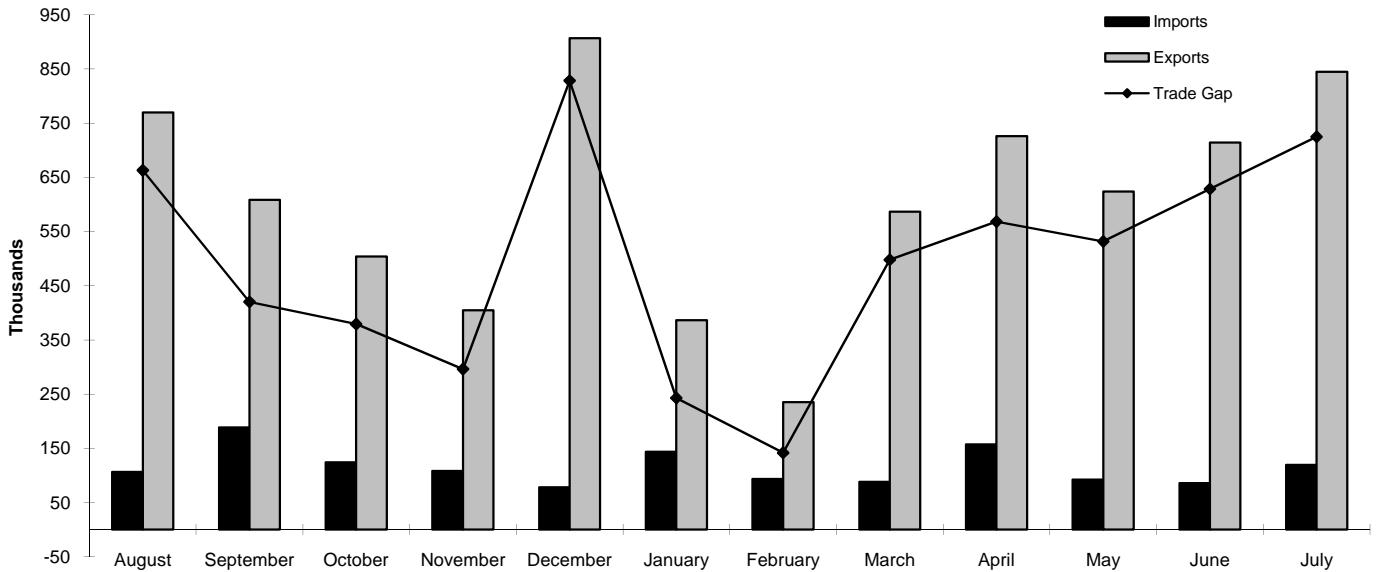
Calendar Months	Imports			UK 12 Month Moving Totals	Exports			UK 12 Month Moving Totals
	2008	2009	% change 2009/2008		2008	2009	% change 2009/2008	
	2008	2009	2009/2008	2009	2008	2009	2009/2008	
January	218.2	143.5	-34.2%	1,829.1	805.2	386.6	-52.0%	7,786.3
February	104.5	93.7	-10.4%	1,818.3	776.7	235.5	-69.7%	7,245.0
March	109.1	88.5	-18.9%	1,797.7	643.7	586.5	-8.9%	7,187.8
April	126.2	157.5	24.9%	1,829.0	702.8	725.9	3.3%	7,211.0
May	217.6	92.4	-57.6%	1,703.8	755.5	624.1	-17.4%	7,079.6
June	339.4	85.8	-74.7%	1,450.1	682.5	714.5	4.7%	7,111.5
July	182.9	119.8	-34.5%	1,387.0	645.0	844.7	31.0%	7,311.2
August	106.4				769.6			
September	188.4				608.8			
October	124.5				503.8			
November	108.3				404.6			
December	78.3				906.8			
<b>Total</b>	<b>1,903.9</b>	<b>781.0</b>			<b>8,204.9</b>	<b>4,117.7</b>		

(a) Data are based on Standard Industrial Trade Classification (SITC) Commodity Code: 010511990

(b) All trade data are provisional and subject to revision

For historic data on this table, and for monthly updates please go to : <https://statistics.defra.gov.uk/esg/datasets/poultrade.xls>

**Chart 2.1: Imports and Exports of Commercial Broiler Chicks**



**Table 2.2: UK Trade in Turkey Poults (a) (b)**

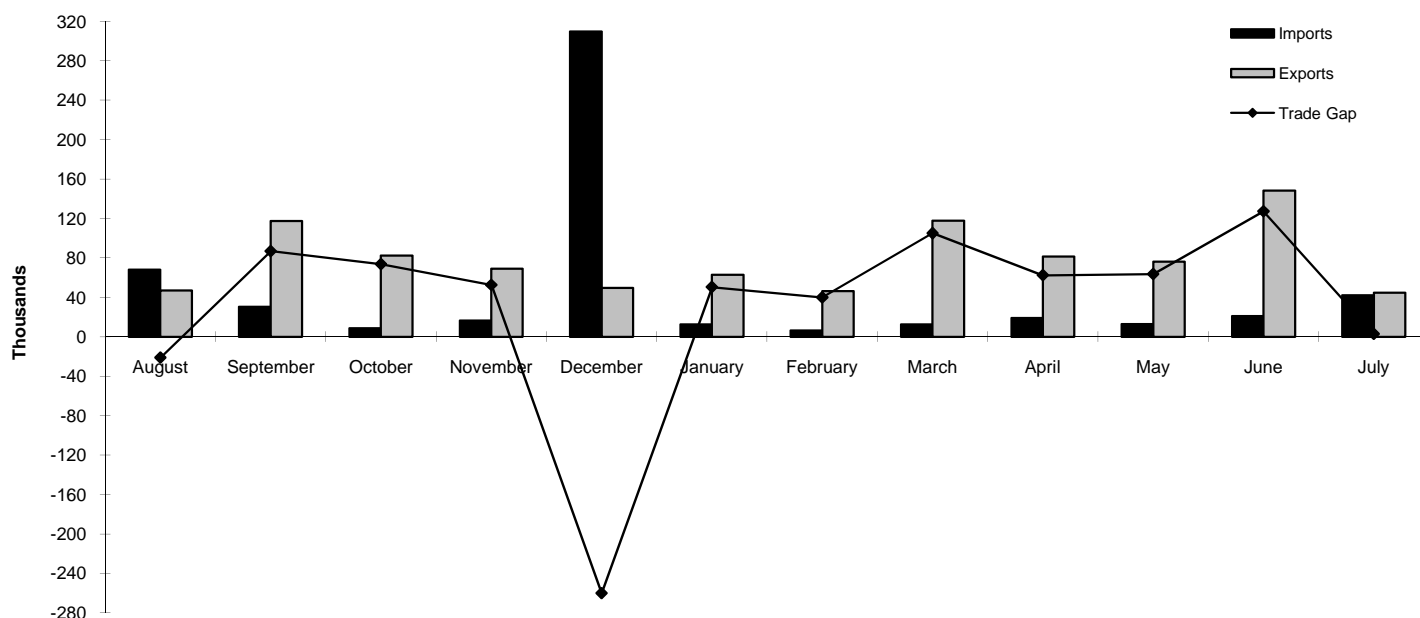
Calendar Months	Imports			UK 12 Month Moving Totals	Exports			UK 12 Month Moving Totals
	2008	2009	% change 2009/2008		2008	2009	% change 2009/2008	
				2009				2009
January	26.31	12.60	-52.1%	646.77	49.02	62.95	28.4%	830.86
February	17.19	6.30	-63.3%	635.88	45.84	46.16	0.7%	831.17
March	22.38	12.60	-43.7%	626.11	83.97	117.59	40.0%	864.80
April	30.95	18.90	-38.9%	614.06	100.63	81.23	-19.3%	845.40
May	15.33	12.75	-16.8%	611.48	62.41	76.24	22.2%	859.23
June	34.97	21.00	-39.9%	597.51	57.38	148.17	158.2%	950.03
July	79.93	42.00	-47.5%	559.59	52.72	44.77	-15.1%	942.07
August	68.02				46.85			
September	30.44				117.24			
October	8.72				82.37			
November	16.59				69.09			
December	309.68				49.41			
<b>Total</b>	<b>660.48</b>	<b>126.15</b>			<b>816.92</b>	<b>577.11</b>		

(a) Data are based on SITC Commodity Code: 010512000

(b) All trade data are provisional and subject to revision

For historic data on this table, and for monthly updates please go to : <https://statistics.defra.gov.uk/esg/datasets/poultrade.xls>

**Chart 2.2: Imports and Exports of Turkey Poults**



**Table 2.3: UK Exports of Live Poultry (other than day old chicks) (a) (b)**

Calendar Months	Live Fowl (c)			UK 12 Month Moving Totals	Live Turkeys (d)			UK 12 Month Moving Totals
	2008	2009	% change 2009/2008		2008	2009	% change 2009/2008	
				2009				2009
January	0.00	0.00	0.0%	0.00	22.32	0.26	-98.9%	195.45
February	0.00	0.00	0.0%	0.00	24.84	0.00	-100.0%	170.62
March	0.00	0.00	0.0%	0.00	15.70	0.64	-95.9%	155.56
April	0.00	0.00	0.0%	0.00	23.82	6.25	-73.8%	137.98
May	0.00	0.00	0.0%	0.00	4.39	0.00	-100.0%	133.59
June	0.00	0.00	0.0%	0.00	0.00	0.00	0.0%	133.59
July	0.00	0.00	0.0%	0.00	4.64	0.00	0.0%	128.95
August	0.00				7.46			
September	0.00				26.18			
October	0.00				21.33			
November	0.00				21.46			
December	0.00				45.39			
<b>Total</b>	<b>0.00</b>	<b>0.00</b>			<b>217.52</b>	<b>7.15</b>		

(a) Imports of live poultry (other than day old chicks) are relatively insignificant

(b) All trade data are provisional and subject to revision

(c) Data are based on SITC Commodity Codes: 010592000 and 010593000

(d) Data are based on SITC Commodity Code: 010599300

For historic data on this table, and for monthly updates please go to : <https://statistics.defra.gov.uk/esg/datasets/poultrade.xls>

## Section 3 UK Slaughterhouse Data - Numbers Slaughtered and Average Weights

Table 3.1: Broiler Slaughterings (a) (b) (c)

Statistical Months (4 or 5 Weeks)	E&W		UK		% change 2009/2008	UK 12 Month Moving Totals	
	2008	2009	2008	2009		2008	2009
	January (5 Weeks)	58.9	61.2	72.7	74.6	2.6%	798.1
February	48.9	49.9	60.2	60.5	0.5%	796.8	786.6
March	49.2	49.4	59.9	60.7	1.4%	794.8	787.4
April (5 Weeks)	61.0	61.7	75.0	76.2	1.6%	791.2	788.6
May	50.1	49.6	60.6	60.8	0.3%	789.1	788.8
June	52.8	49.3	62.1	60.8	-2.1%	788.6	787.5
July (5 Weeks)	64.4	61.9	77.9	76.0	-2.4%	787.1	785.6
August	50.3	49.2	60.7	59.9	-1.2%	787.0	784.9
September	49.5		60.2			786.8	
October (5 Weeks)	61.0		74.8			784.6	
November	48.1		60.1			782.8	
December	50.4		60.1			784.4	
<b>Total</b>	<b>644.6</b>	<b>432.1</b>	<b>784.4</b>	<b>529.7</b>			

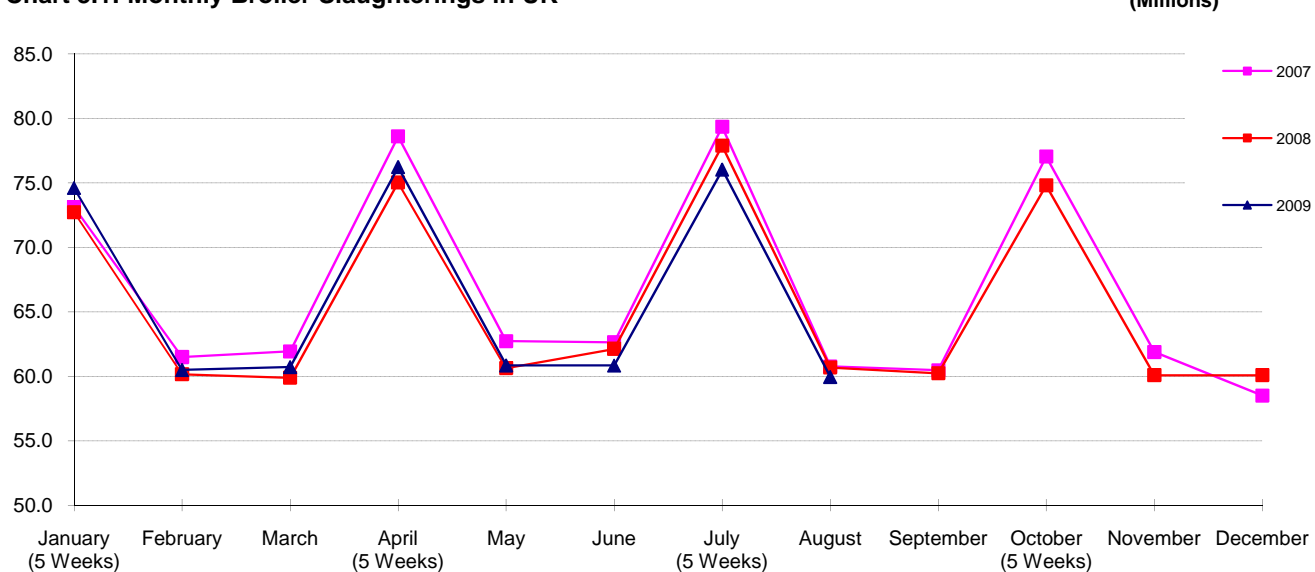
(a) Data covers slaughterings by registered slaughterhouses only.

(b) Excludes 'Dead on Arrivals' and slaughterhouse rejects.

(c) Slaughtering figures contain UK hatched birds and imported birds.

For historic data on this table, and for monthly updates please go to : <https://statistics.defra.gov.uk/esg/datasets/pouls1.xls>

Chart 3.1: Monthly Broiler Slaughterings in UK





**Table 3.2: Boiling Fowl Slaughterings (a) (b) (f)**

(Millions)

Statistical Months (4 or 5 Weeks)	E&W		E&W		UK All Boiling Fowl			UK 12 Month Moving Totals	
	Spent Layers (c)		Spent Broiler Breeders (d)		2008	2009	% change 2009/2008	2008	2009
	2008	2009	2008	2009					
January (5 Weeks)	2.60	2.30	0.40	0.36	3.18	2.82	-11.1%	37.94	38.06
February	2.65	3.33	0.54	0.30	3.34	3.73	11.7%	37.85	38.45
March	2.51	2.50	0.47	0.54	3.10	3.12	0.7%	37.61	38.47
April (5 Weeks)	1.97	2.01	0.62	0.43	3.05	2.62	-14.1%	38.01	38.04
May	2.59	2.98	0.46	0.51	3.44	3.65	6.1%	37.92	38.25
June	2.23	2.76	0.44	0.61	3.06	3.53	15.4%	38.26	38.72
July (5 Weeks)	1.63	2.44	0.35	0.23	2.70	3.13	15.9%	37.91	39.15
August	2.27	2.61	0.45	0.46	3.34	3.49	4.5%	38.02	39.30
September	2.44		0.34		3.34			38.82	
October (5 Weeks)	2.15		0.41		3.03			38.70	
November	2.59		0.64		3.62			38.93	
December	2.40		0.46		3.22			38.41	
<b>Total</b>	<b>28.04</b>	<b>20.93</b>	<b>5.56</b>	<b>3.45</b>	<b>38.41</b>	<b>26.09</b>			

(a) Data covers slaughterings by registered slaughterhouses only

(b) Excludes 'Dead on Arrivals' and slaughterhouse rejects

(c) Spent commercial layer hens and spent layer breeders

(d) Spent broiler breeder hens

(f) Slaughtering figures contain UK hatched birds and imported birds

 For historic data on this table, and for monthly updates please go to : <https://statistics.defra.gov.uk/esg/datasets/pouls1.xls>
**Table 3.3: Turkey Slaughterings (a) (b) (f)**

(Millions)

Statistical Months (4 or 5 Weeks)	E&W		E&W		UK Turkeys			UK 12 Month Moving Totals	
	Light Turkeys (e)		Heavy Turkeys (e)		2008	2009	% change 2009/2008	2008	2009
	2008	2009	2008	2009					
January (5 Weeks)	0.59	0.48	1.12	1.10	1.77	1.66	-6.3%	14.77	14.81
February	0.38	0.33	0.58	0.59	1.01	0.99	-1.4%	14.74	14.80
March	0.30	0.27	0.48	0.53	0.87	0.87	0.1%	14.72	14.80
April (5 Weeks)	0.26	0.34	0.74	0.62	1.11	1.09	-1.5%	14.78	14.78
May	0.29	0.22	0.63	0.65	0.99	0.95	-4.2%	14.85	14.74
June	0.41	0.25	0.59	0.67	1.06	0.99	-6.6%	14.93	14.67
July (5 Weeks)	0.55	0.54	0.61	0.57	1.28	1.23	-4.5%	14.99	14.61
August	0.37	0.37	0.45	0.43	0.96	0.91	-5.8%	15.02	14.56
September	0.36		0.39		0.86			15.07	
October (5 Weeks)	0.47		0.93		1.52			15.00	
November	0.38		1.09		1.61			14.97	
December	0.90		0.54		1.89			14.93	
<b>Total</b>	<b>5.27</b>	<b>2.80</b>	<b>8.17</b>	<b>5.16</b>	<b>14.93</b>	<b>8.68</b>			

(a) Data covers slaughterings by registered slaughterhouses only

(b) Excludes 'Dead on Arrivals' and slaughterhouse rejects

(e) Turkeys are split between light and heavy birds as follows: Light &lt;8Kg &amp; Heavy &gt;8Kg liveweight.

(f) Slaughtering figures contain UK hatched birds and imported birds

 For historic data on this table, and for monthly updates please go to : <https://statistics.defra.gov.uk/esg/datasets/pouls1.xls>
**Table 3.4: Average Liveweights per bird at Point of Slaughter in England & Wales**

(Kilograms)

Statistical Months (4 or 5 Weeks)	Broilers	Spent	Spent	Boiling Fowls	Turkeys	Turkeys	Turkeys
	2008/2009	Layers (c)	Breeders (d)	(All)	(Light) (e)	(Heavy) (e)	(All)
	2008/2009	2008/2009	2008/2009	2008/2009	2008/2009	2008/2009	2008/2009
September	2.20	1.76	3.72	2.00	6.02	16.80	11.58
October (5 weeks)	2.19	1.78	3.65	2.08	6.62	16.49	13.18
November	2.22	1.81	3.67	2.18	6.27	15.08	12.82
December	2.23	1.84	3.71	2.14	5.49	13.63	8.52
January (5 weeks)	2.23	1.77	3.81	2.05	5.80	16.07	12.95
February	2.22	1.81	3.64	1.96	6.31	15.19	12.03
March	2.19	1.79	3.72	2.14	6.73	14.70	12.04
April	2.20	1.82	3.66	2.14	6.37	15.09	12.02
May	2.22	1.81	3.76	2.10	5.77	14.29	12.09
June	2.24	1.81	3.79	2.17	5.89	15.09	12.57
July	2.17	1.80	3.78	1.97	5.99	16.66	11.46
August	2.20	1.78	3.73	2.08	5.35	15.50	10.77
<i>% change on previous month</i>	1.1%	-0.9%	-1.2%	5.5%	-10.8%	-7.0%	-6.1%

(c) Spent commercial layer hens and spent layer breeders.

(d) Spent broiler breeder hens.

(e) Turkeys are split between light and heavy birds as follows: Light &lt;8Kg &amp; Heavy &gt;8Kg liveweight.

 For historic data on this table, and for monthly updates please go to : <https://statistics.defra.gov.uk/esg/datasets/pouls1.xls>

## Section 4 UK Poultrymeat Production, Trade and Domestic Usage (Net of Offal)

**Table 4.1: UK Poultrymeat Production (a)**

(Thousand tonnes carcass weight) (b)

Period		Broilers	Boiling Fowl	Turkeys	Others	Total	% change since last year	UK 12 Month Moving Totals
2008	January	112.80	4.27	17.11	3.07	137.25	-2.06%	1,456.36
	February	92.17	4.51	9.48	2.73	108.89	-4.93%	1,450.72
	March	92.42	4.26	7.60	2.77	107.04	-4.47%	1,445.71
	April	113.82	4.75	11.61	3.43	133.60	-4.36%	1,439.62
	May	90.98	4.82	10.22	2.75	108.77	-5.62%	1,433.14
	June	96.83	4.43	10.51	2.66	114.42	0.32%	1,433.51
	July	119.85	4.18	11.22	3.10	138.36	-1.52%	1,431.38
	August	93.98	4.77	8.56	2.54	109.86	1.54%	1,433.05
	September	92.06	4.69	6.47	2.57	105.79	2.21%	1,435.34
	October	113.98	4.25	16.09	3.43	137.76	-1.99%	1,432.54
	November	91.00	5.11	17.04	2.98	116.13	-3.74%	1,428.02
	December	94.90	4.44	9.54	2.99	111.87	1.55%	1,429.73
<b>Total</b>		<b>1,204.78</b>	<b>54.49</b>	<b>135.44</b>	<b>35.02</b>	<b>1,429.73</b>	<b>-2.02%</b>	
2009	January	115.06	3.71	16.46	3.08	138.31	0.78%	1,430.79
	February	92.89	4.62	9.54	2.71	109.76	0.80%	1,431.66
	March	91.40	4.31	8.41	2.77	106.89	-0.14%	1,431.51
	April	111.72	3.81	10.12	3.43	129.09	-3.37%	1,427.01
	May	90.52	4.89	10.20	2.74	108.35	-0.39%	1,426.58
	June	90.50	4.97	11.14	2.66	109.27	-4.50%	1,421.43
	July	113.51	4.19	10.50	3.10	131.30	-5.10%	1,414.37
	August	91.15	4.72	8.03	2.54	106.44	-3.11%	2,702.37
<b>Total</b>		<b>796.74</b>	<b>35.21</b>	<b>84.42</b>	<b>23.04</b>	<b>939.41</b>		

(a) Includes estimates for slaughterings on-farm and at unregistered slaughterhouses.

(b) Converted to whole bird equivalent carcass weight net of offal.

For historic data on this table please go to: <https://statistics.defra.gov.uk/esg/datasets/poulpsq.xls>

**Table 4.2: UK Poultrymeat Imports (a)**

(Thousand tonnes carcass weight) (b)

Calendar Months	Whole Bird (c)			Cuts (d)			Total			UK 12 Month Moving Totals
			% change			% change			% change	2009
	2008	2009	2009/2008	2008	2009	2009/2008	2008	2009	2009/2008	
January	6.30	4.43	-29.7%	30.12	26.33	-12.6%	36.42	30.76	-15.5%	400.85
February	5.29	4.15	-21.5%	26.10	25.37	-2.8%	31.39	29.52	-6.0%	398.98
March	5.66	5.33	-5.8%	29.28	30.39	3.8%	34.94	35.71	2.2%	399.75
April	6.04	4.99	-17.5%	28.68	28.17	-1.8%	34.72	33.16	-4.5%	398.18
May	6.62	4.84	-26.9%	26.89	28.14	4.6%	33.51	32.98	-1.6%	397.65
June	5.53	5.73	3.7%	29.84	27.68	-7.2%	35.37	33.42	-5.5%	395.69
July	5.19	4.97	-4.3%	27.95	28.35	1.5%	33.14	33.32	0.6%	395.88
August	4.77			24.71			29.49			
September	5.72			27.74			33.46			
October	5.82			28.41			34.23			
November	6.16			28.95			35.11			
December	5.73			29.00			34.73			
<b>Total</b>	<b>68.83</b>	<b>34.44</b>		<b>337.67</b>	<b>194.42</b>		<b>406.50</b>	<b>228.86</b>		

(a) All trade data are provisional and subject to revision

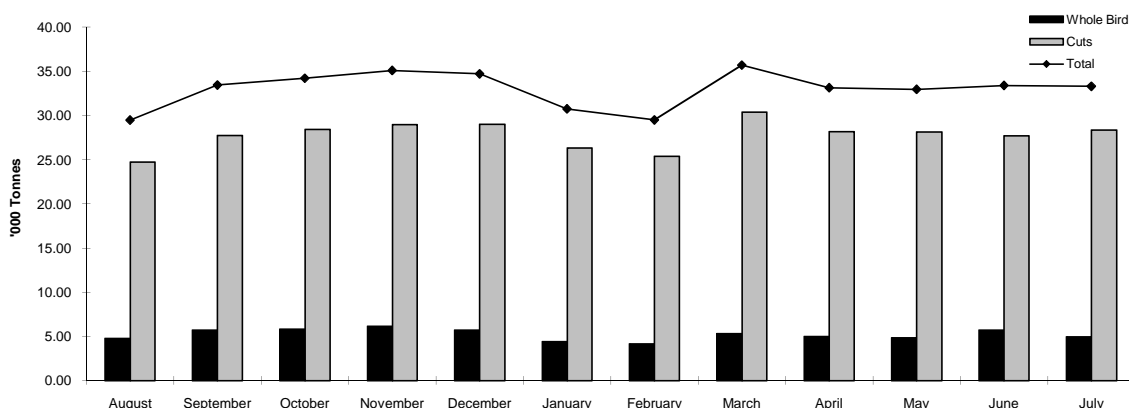
(b) Converted to whole bird equivalent carcass weight net of offal

(c) Data are based on SITCs: 012.31 and 012.32

(d) Data are based on SITCs: 012.34 and 012.35, excluding codes referring to offal

For historic data on this table please go to: <https://statistics.defra.gov.uk/esg/datasets/poulpsq.xls>

**Chart 4.2: Imports of Whole Birds and Cuts**



**Table 4.3: UK Poultrymeat Exports (a)**

(Thousand tonnes carcass weight) (b)

Calendar Months	Whole Bird (c)			Cuts (d)			Total			UK 12 Month Moving Totals
	2008	2009	% change 2009/2008	2008	2009	% change 2009/2008	2008	2009	% change 2009/2008	2009
January	0.79	1.22	54.7%	21.67	19.89	-8.2%	22.46	21.12	-6.0%	276.86
February	0.92	0.92	-0.3%	20.21	18.92	-6.4%	21.13	19.84	-6.1%	275.56
March	0.86	0.73	-15.6%	23.38	18.66	-20.2%	24.24	19.38	-20.0%	270.71
April	0.83	0.84	1.8%	24.75	22.38	-9.6%	25.58	23.22	-9.2%	268.35
May	0.98	0.75	-23.3%	19.72	19.68	-0.2%	20.70	20.43	-1.3%	268.08
June	0.75	0.71	-5.3%	23.46	21.15	-9.8%	24.22	21.87	-9.7%	265.74
July	1.12	0.71	-37.3%	24.11	21.05	-12.7%	25.23	21.76	-13.8%	262.26
August	1.20			21.23			22.43			
September	1.26			21.39			22.65			
October	2.13			24.45			26.57			
November	1.63			20.55			22.17			
December	1.87			18.95			20.82			
<b>Total</b>	<b>14.35</b>	<b>5.88</b>		<b>263.85</b>	<b>141.74</b>		<b>278.20</b>	<b>147.62</b>		

(a) All trade data are provisional and subject to revision

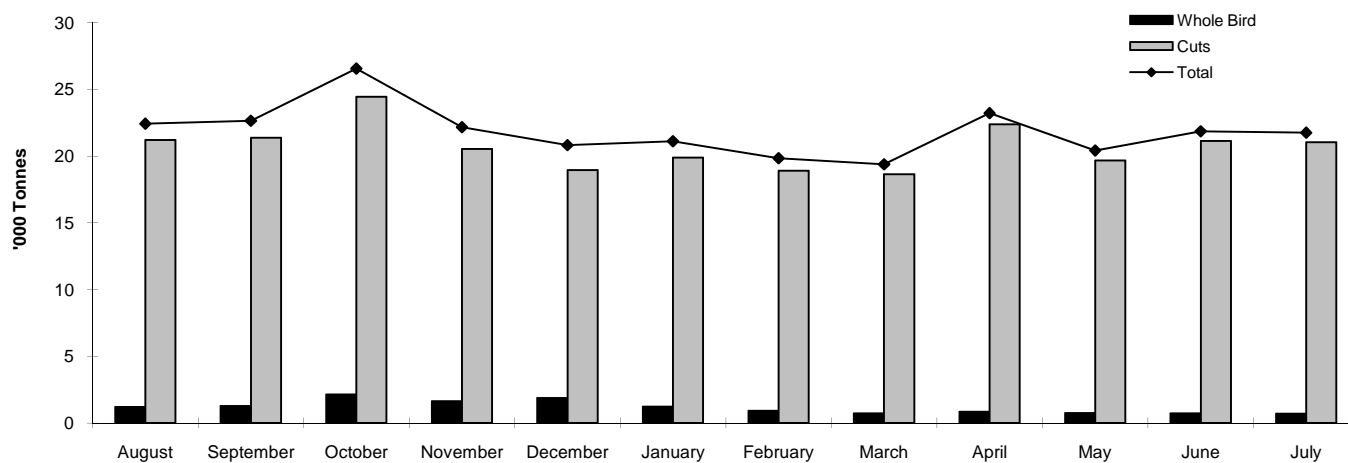
(b) Converted to whole bird equivalent carcass weight net of offal

(c) Data are based on SITCs: 012.31 and 012.32

(d) Data are based on SITCs: 012.34 and 012.35, excluding codes referring to offal

For historic data on this table, and for monthly updates please go to: <https://statistics.defra.gov.uk/esg/datasets/poultrade.xls>

**Chart 4.3: Exports of Whole Birds and Cuts**



**Table 4.4: UK Production and Total Supply of Poultrymeat (a) (b)**

(Thousand tonnes)

Period	Home Fed Production	Imported	Exported	Total New Supply (c)	% change since last year	
2008	January	137.25	36.42	22.46	151.20	-2.94%
	February	108.89	31.39	21.13	119.14	-4.85%
	March	107.04	34.94	24.24	117.74	-6.76%
	April	133.60	34.72	25.58	142.74	-7.49%
	May	108.77	33.51	20.70	121.58	-3.58%
	June	114.42	35.37	24.22	125.58	-1.07%
	July	138.36	33.14	25.23	146.26	-4.67%
	August	109.86	29.49	22.43	116.92	2.50%
	September	105.79	33.46	22.65	116.60	-3.83%
	October	137.76	34.23	26.57	145.41	-5.76%
	November	116.13	35.11	22.17	129.07	-8.57%
	December	111.87	34.73	20.82	125.77	-1.61%
<b>Total</b>	<b>1,429.73</b>	<b>406.50</b>	<b>278.20</b>	<b>1,558.03</b>	<b>-4.22%</b>	
2009	January	138.31	30.76	21.12	147.96	-2.15%
	February	109.76	29.52	19.84	119.44	0.25%
	March	106.89	35.71	19.38	123.22	4.65%
	April	129.09	33.16	23.22	139.02	-2.61%
	May	108.35	32.98	20.43	120.90	-0.57%
	June	109.27	33.42	21.87	120.82	-3.79%
	July	131.30	33.32	21.76	142.86	-2.33%
<b>Total</b>	<b>832.97</b>	<b>228.86</b>	<b>147.62</b>	<b>914.21</b>		

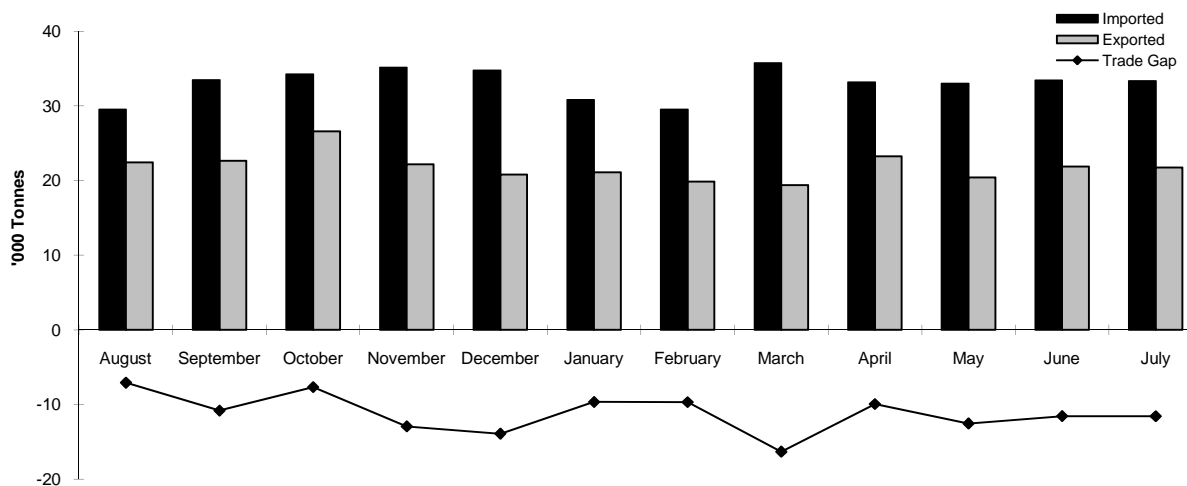
(a) All production and trade data are provisional and subject to revision.

(b) Converted to whole bird equivalent carcass weight net of offal.

(c) Production plus Imports minus Exports.

For historic data on this table please go to: <https://statistics.defra.gov.uk/esg/datasets/poulpsq.xls>

**Chart 4.4: Total Poultrymeat Imports and Exports**



## Section 5 OTHER POULTRY STATISTICS

**Table 5.1: UK Production of Compound Poultry Feed (a) (b) (c) (d)**

(Thousand Tonnes)

Statistical Months (4 or 5 Weeks)	Broilers			Layers (e)			Total (f)			UK 12 Month Moving Totals
	2008	2009	% change 2009/2008	2008	2009	% change 2009/2008	2008	2009	% change 2009/2008	
	January	281.2	265.5	-5.6%	108.5	110.5	1.8%	482.9	470.1	
February	268.7	256.4	-4.6%	106.9	105.5	-1.3%	472.4	454.9	-3.7%	6,217.1
March (5 weeks)	319.8	317.6	-0.7%	116.4	120.7	3.7%	555.1	552.3	-0.5%	6,214.3
April	268.6	277.1	3.2%	110.8	110.6	-0.1%	486.7	488.5	0.4%	6,216.1
May	274.6	276.5	0.7%	109.9	109.9	0.0%	499.0	492.0	-1.4%	6,209.0
June (5 weeks)	325.0	328.2	1.0%	114.3	119.9	4.9%	586.0	587.8	0.3%	6,210.9
July	280.4	267.4	-4.6%	113.5	113.4	-0.1%	537.2	515.5	-4.0%	6,189.2
August	268.9			105.9			501.6			
September (5 weeks)	321.5			116.3			579.1			
October	277.7			115.4			512.5			
November	264.7			105.7			487.5			
December (5 weeks)	304.2			122.7			547.4			
<b>Total</b>	<b>3,455.5</b>	<b>1,988.8</b>		<b>1,346.3</b>	<b>790.5</b>		<b>6,247.4</b>	<b>3,561.1</b>		

(a) Data is provisional and may be subject to revisions

(b) Includes feed produced for sale by all known compounders, and feed produced for own use by integrated poultry units with more than 50,000 birds

(c) Excludes 'straights' and feed produced for own use by units with less than 50,000 birds

(d) All Northern Ireland figures include an estimate for smaller feed compounders

(e) Includes breeders in Northern Ireland

(f) The GB element of the total includes compound feed for all broilers; layers; turkeys; breeders and rearers

**Table 5.2: Average Poultry Feed Prices (a)**

(pence per kg)

Quarters	2008	2009	% change 2009/2008
January to March	21.3	21.5	0.9%
April to June	23.5		
July to September	24.0		
October to December	21.2		
<b>Average</b>	<b>22.5</b>	<b>21.5</b>	

(a) The average poultry feed price is weighted by production of compounds from sales compounders only and excludes production from Integrated Poultry Units.

For historic data on this table, and for quarterly updates please go to: <https://statistics.defra.gov.uk/esg/datasets/hstvv.xls>

**Table 5.3: Retail Prices**

Calendar Months	Chicken Fresh (a)			Poultry Index (b)		
	(Pence per kg)		% change	January 1987 = 100		% change
	2008	2009	2009/2008	2008	2009	2009/2008
January	249.0	304.0	22.1%	117.6	131.2	11.6%
February	249.0	294.0	18.1%	119.2	132.8	11.4%
March	245.0	296.0	20.8%	121.0	131.9	9.0%
April	254.0	295.0	16.1%	122.4	132.8	8.5%
May	271.0	290.0	7.0%	125.4	131.1	4.5%
June	288.0	291.0	1.0%	133.1	129.7	-2.6%
July	302.0	280.0	-7.3%	137.3	130.2	-5.2%
August	294.0			132.4		
September	296.0			133.5		
October	306.0			134.5		
November	304.0			130.9		
December	299.0			131.7		
<b>Average</b>	<b>279.8</b>	<b>292.9</b>		<b>128.3</b>	<b>131.4</b>	

(a) As used in collating the Poultry Index. Roasting, oven ready, per kg

(b) As used in the Retail Price Index (RPI)

**Table 5.4: EU poultry data**

Many EU agricultural statistics including poultry statistics can be found at:

[http://epp.eurostat.ec.europa.eu/portal/page?\\_pageid=1090.30070682.1090.33076576&\\_dad=portal&\\_schema=PORTAL](http://epp.eurostat.ec.europa.eu/portal/page?_pageid=1090.30070682.1090.33076576&_dad=portal&_schema=PORTAL)

A summary dataset containing selected EU member state poultry placing data can be found at:

<https://statistics.defra.gov.uk/esg/datasets/euplace.xls>

## SOURCES OF POULTRY STATISTICS

### Other Defra publications (available via <https://www.defra.gov.uk>)

- 1 Agriculture in the United Kingdom  
- annual data on poultry populations, egg production, prices, farm-gate valuations, and trade
- 2 Farm Incomes in the United Kingdom  
- annual data on incomes by farm type, from the farm Business Survey.
- 3 June Agricultural Survey data for England and the United Kingdom  
- annual data from the June survey, on populations, numbers and size of holdings.
- 4 Poultry Feed Production for Units in Great Britain with Large Flocks  
- monthly statistics notice.
- 5 GB Animal Feed  
- monthly statistics notice.
- 6 Egg Statistics Notice  
- quarterly statistics notice.
- 7 Quarterly Supplies and Total for Domestic Usage of Meat in the United Kingdom  
- quarterly dataset.
- 8 Expenditure and Food Survey (Family Food)  
- yearly press release on household consumption and expenditure.

### Industry Publications

- 1 The British Poultry Council  
Europoint House, 5-11 Lavington Street, London. SE1 0NZ  
Contact - 0207 202 4760  
<http://www.poultry.uk.com>
- 2 International Egg Commission (IEC)  
Contact - 0207 490 3493
- 3 Poultry Forum - The NFU  
Agriculture House, Stoneleigh, Warwickshire. CV8 2LZ  
Contact - 01285 862377
- 4 Poultry World  
Quadrant House, Sutton, Surrey. SM2 5AS  
Contact - 0208 652 4020